

ANNUAL REPORT

2023-2024



Table of Contents

01. Our Achievements	03
02. Our Footprint	04
03. Our Approach	05
05. Our Thematics	06
06. Climate Action	08
07. Education For All	12
08. Integrated Rural Development	16
06. Skills and Livelihood	20
07. Health	21
08. Diversity, Equity, and Inclusion	22
09. Volunteering	24
10. Intervention Numbers	26
11. Stories & Testimonials	28
12. Fifteen Years of United Way Bengaluru	30
13. Financials	32
14. Awards & Recognitions	35

Abbreviations

- 01. AWCs - Anganwadi Centres**
- 02. ESG - Environmental, Social and Governance**
- 03. M&E - Monitoring & Evaluation**
- 04. UN - United Nations**
- 05. STEM - Science, Technology, Engineering, and Mathematics**
- 06. WaSH - Water, Sanitation and Hygiene**
- 07. AWWs - Anganwadi Workers**
- 08. MGNREGA - Mahatma Gandhi National Rural Employment Guarantee Act**
- 09. ITIs - Industrial Training Institutes**
- 10. SHGs - Self Help Groups**
- 11. PwDs - Persons with Disabilities**
- 12. TLM - Teaching and Learning Material**
- 13. PHC - Primary Health Centre**
- 14. CSR - Corporate Social Responsibility**
- 15. ECCE - Early Childhood Care & Education**
- 16. LGBTQ+ - Lesbian, Gay, Bisexual, Transgender, Queer**
- 17. NGO - Non Governmental Organisation**
- 18. CO2 - Carbon Dioxide**
- 19. UWBe - United Way Bengaluru**

CEO Talks

Dear all,

As we reflect on the past year, I am filled with deep gratitude and pride for the incredible work that **United Way Bengaluru (UWBe)** has accomplished in our communities. Through the collective efforts of donors, volunteers, partners, and staff, our endeavors have touched **20 lakh lives**, creating a meaningful impact in addressing the most pressing challenges communities face today.



UWBe has achieved a momentous milestone this year, marking **15 years of impactful service**. Our initiatives have addressed immediate needs – offering resources for education, creating self-sustainable livelihoods for rural communities, reviving the lakes and water bodies, conserving rainwater, and catalyzing volunteers towards community engagement – and paved the way for long-term, sustainable change in the lives of countless people. Two of the most inspiring interventions this year include the **Mangroves Matter**, to protect and conserve vital mangrove ecosystems, and **Aikyam**, a campaign towards creating a safe space for the PRIDE community.

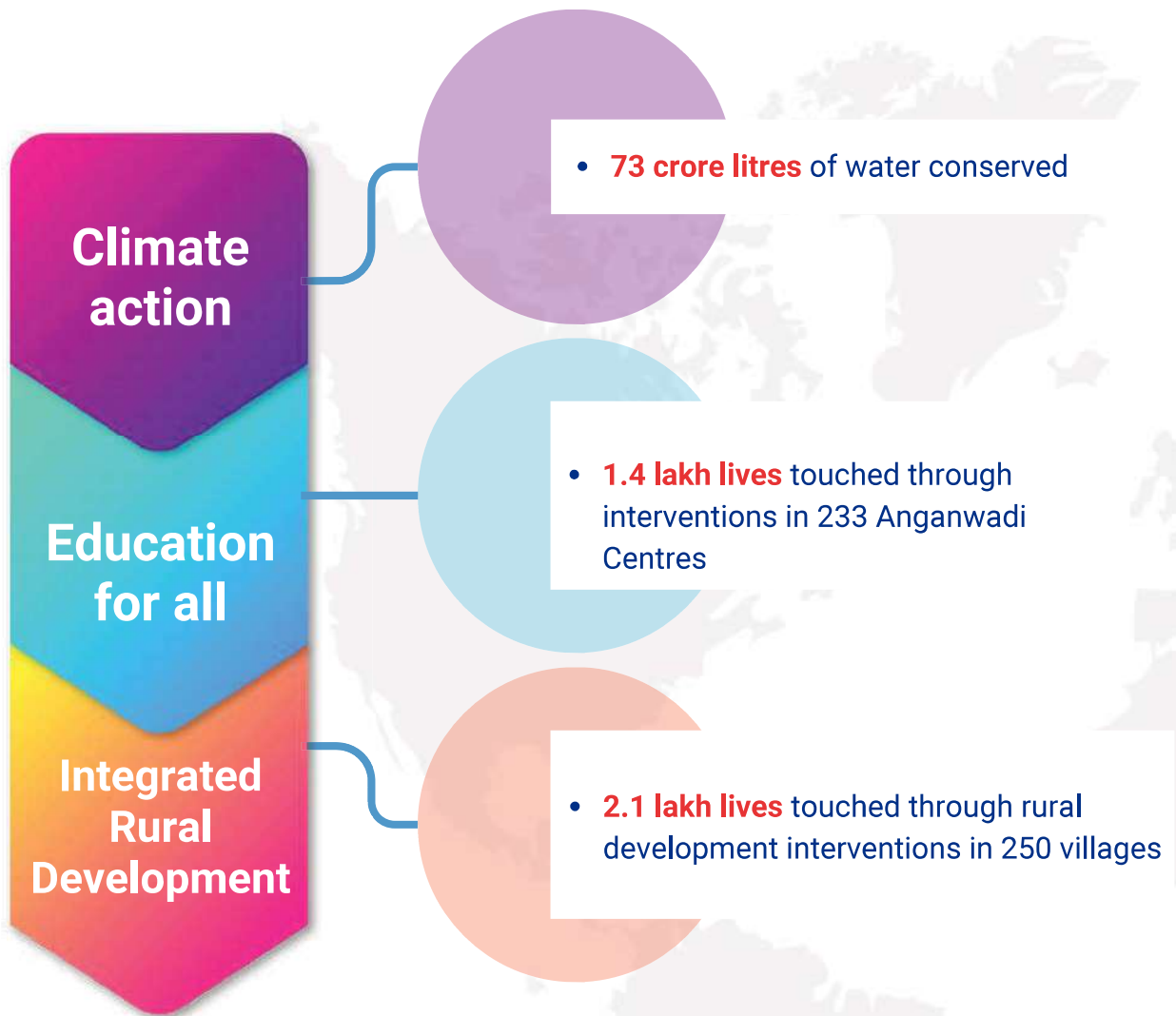
The support we've received from our stakeholders has helped to expand our interventions and programs that ensure children succeed in school, families gain financial independence, and communities have the resources to live healthier lives. Your commitment to our mission is a testament to the power of collective action. Thank you for being a vital part of our journey.

Looking ahead, we are excited to build on the successes of this year. We will focus on deepening our impact, expanding our reach, and creating even more pathways for the communities to succeed. Together, we can create communities where everyone has the opportunity to live and thrive.

Your's sincerely,

Rajesh Krishnan

Our Achievements



20 lakh lives touched through all our programs across geographies



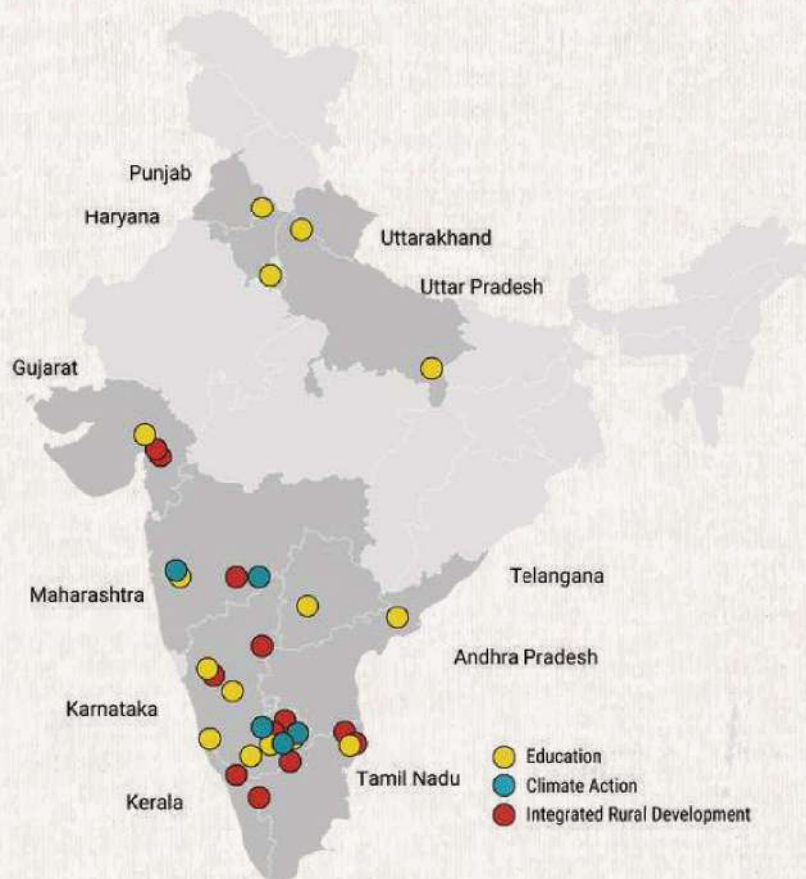
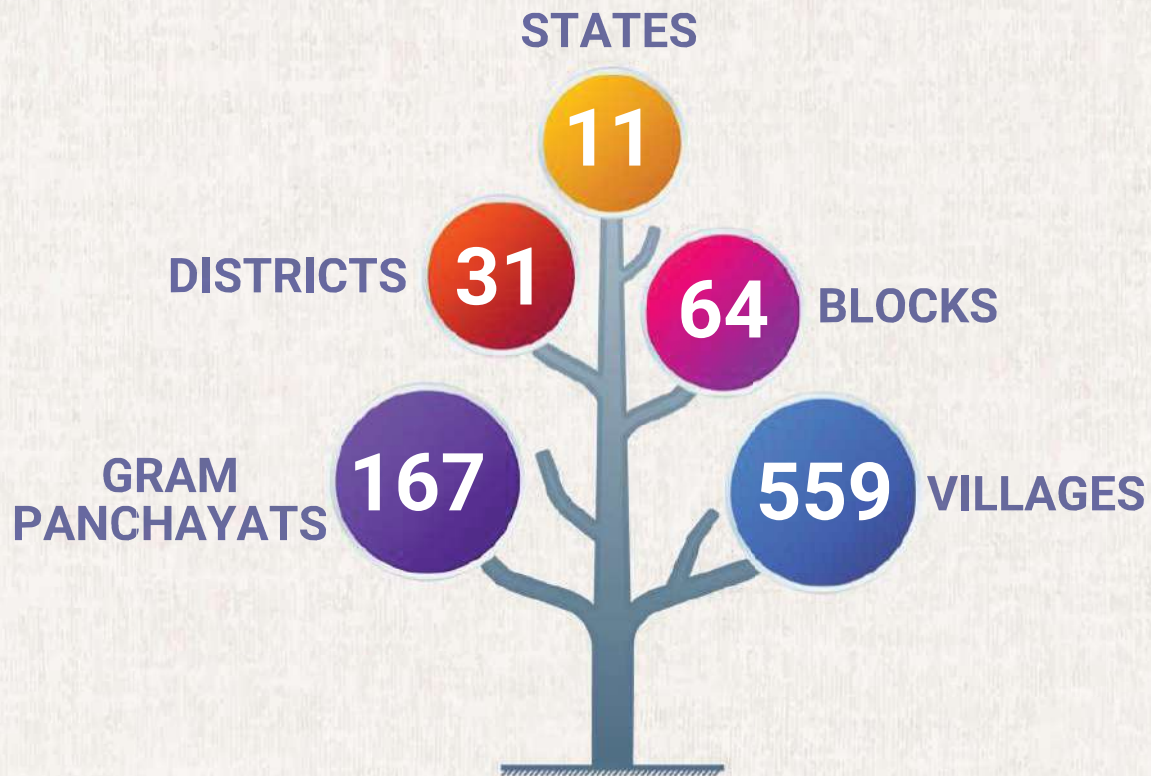
28,207 volunteers engaged



Rs. 104.43 crore received in grants & donations

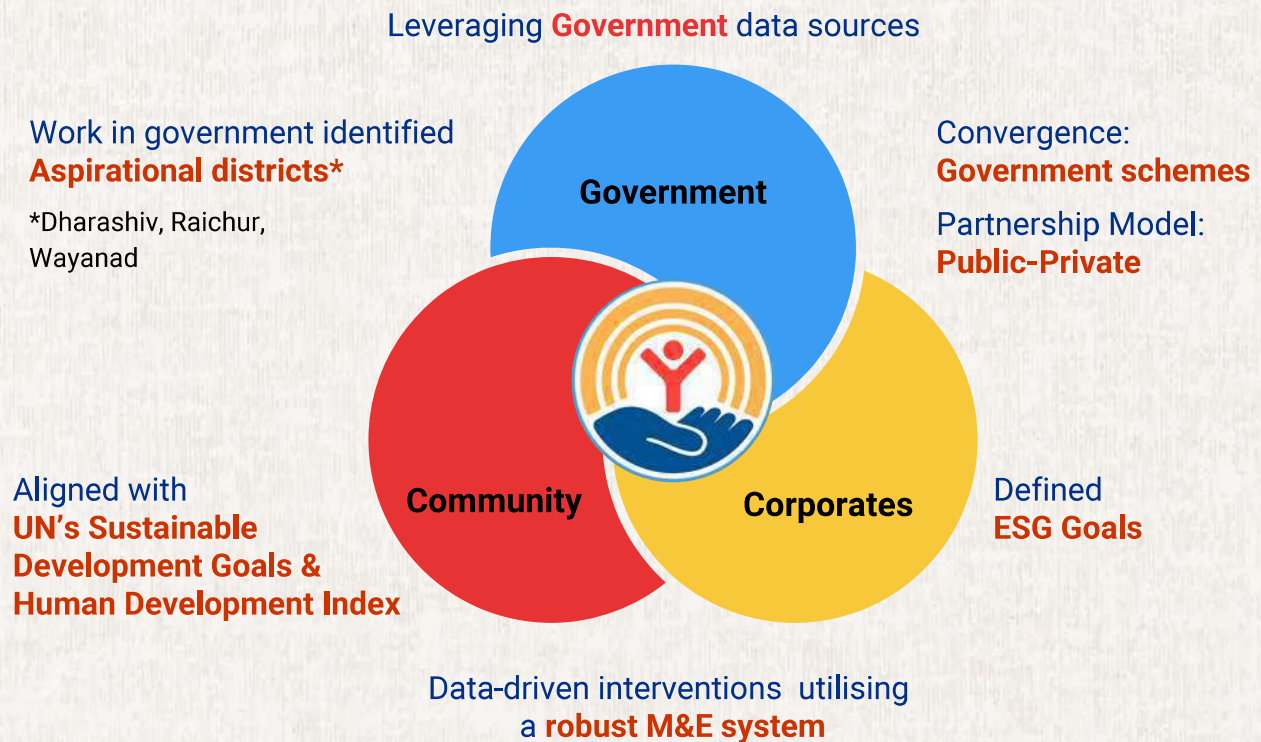


Our footprint



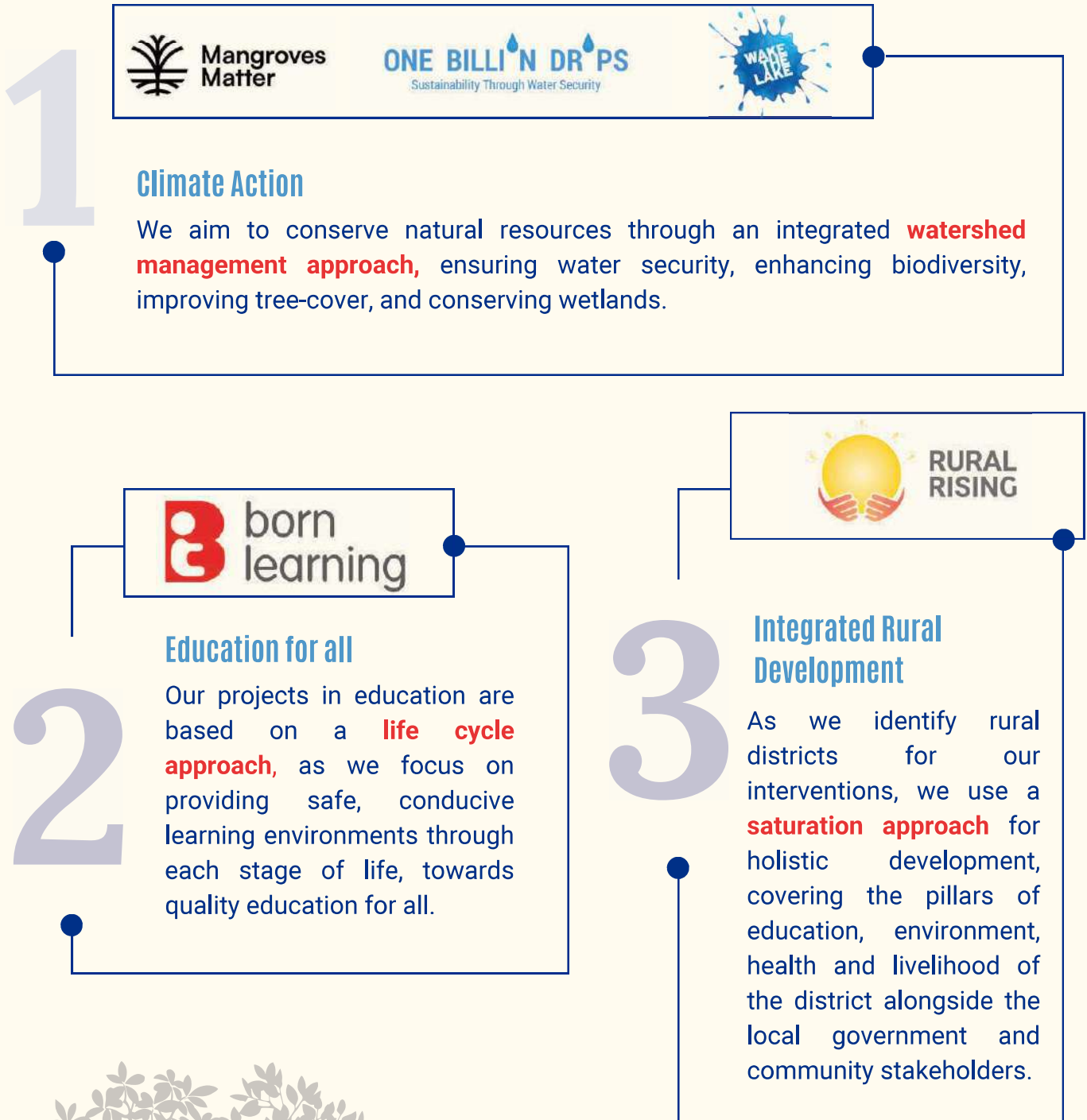
Our Approach

United Way Bengaluru completed **15 years** of service this year. As we have grown, the reach of our projects has **expanded to 11 states**. While our work is spread across a wide variety of projects and activities in different focus areas, certain key aspects of our approach remain consistent to ensure success and sustainability in everything we do.



Our Thematics

We work with stakeholders across the country making impactful change towards various development goals. Our flagship programs are spread across thematic areas: **Climate Action, Education, Rural Development, Health and Nutrition, Skills and Livelihood, Diversity, Equity & Inclusion, and Volunteering.**



4



GENDER



alkyam

Diversity, Equity, and Inclusion

Through our programs, we work towards improved quality of life for those who are marginalized, to build **sensitivity**, create **safe spaces**, and improve accessibility to opportunities for everyone regardless of identity.

5

Volunteering

Our corporate volunteering approach **transcends isolated activities, focusing on creating meaningful, measurable impact**. We align volunteer efforts with strategic goals to empower corporates and drive sustainable development.



Climate Action

Fifteen years ago, United Way Bengaluru's first intervention was Wake the Lake - an idea to work towards reviving Bengaluru's once thriving system of lakes. As of 2024, we have revived **52 lakes**, creating a water harvesting potential of **46 crore litres** this year alone. Over the years, our actions have continued to expand to additional environmental concerns - with our flagship programs Wake the Lake & One Billion Drops addressing depleting groundwater levels, various sapling plantation & afforestation efforts towards improving tree cover, installation of solar lights and rooftops in rural areas for environmentally sustainable community development, as well as our latest efforts into preserving and rewilding mangroves along the coast.

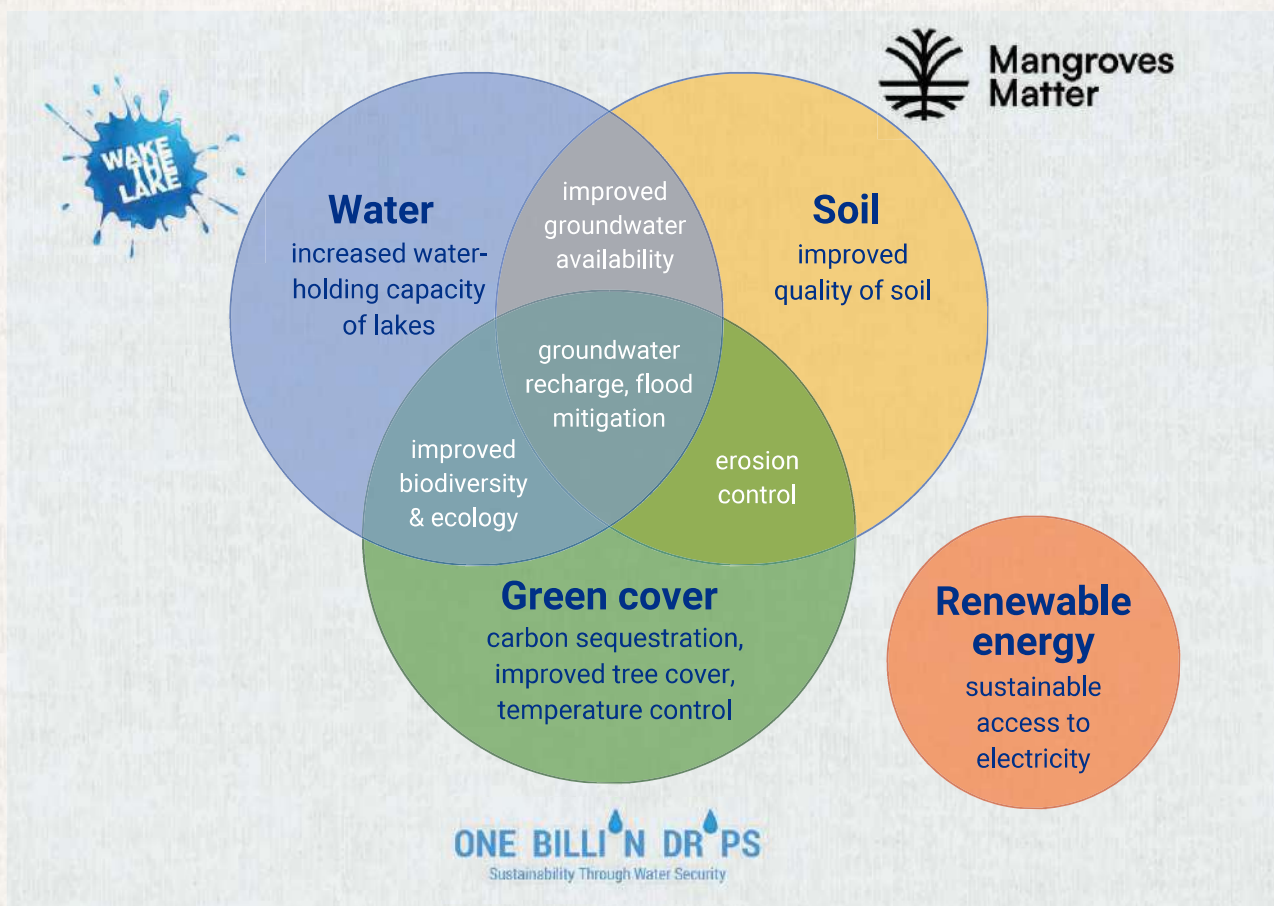


Components of Climate Action

Our various activities address a combination of water, soil, and green cover. However, whether through direct interventions such as access to solar energy powered street lights, or indirectly through increased water availability for agricultural and domestic needs, the communities that we work with also constantly benefit from our climate impact projects.

Some of our interventions include:

- Restoration & rejuvenation of lakes and ponds
- Construction of mini reservoirs
- Construction of check dams
- Construction of percolation wells
- Construction of water absorption trenches
- Restoration of open wells
- Development of gabion structures
- Plantation of saplings
- Development of Miyawaki forests
- Rewilding of mangroves
- Establishment of solar lights & solar rooftops



Our New Climate Action Initiative

Reviving Coastal Ecology: Mangrove Rewilding

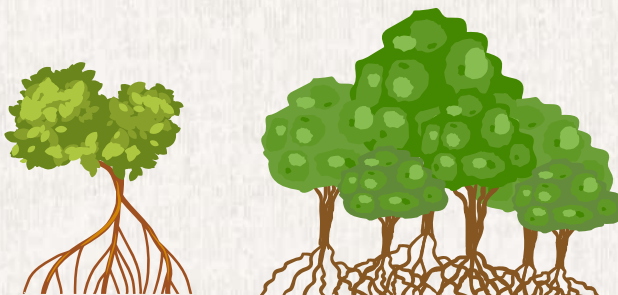


This year, we decided to expand our efforts into mangrove rewilding. Pulicat Lake in Andhra Pradesh had an ecosystem full of mangroves in the past, and our goal is to plant and maintain saplings that will revive this ecosystem in the decades to come.

The intervention has been done entirely in collaboration with local families, who are granted stewardship of this land. As they play the role of guardians to these saplings, protecting them from wildlife and natural disasters, they build a deep connection and appreciation of the importance of Mangrove plantation. They have been trained and given knowledge of the various mangrove saplings and the conditions required for their growth. This ensures that the mangroves continue to thrive in the long run as well.

As we continue to grow these projects and plan for more, we have ended the year with the launch of our latest flagship program:

Mangroves Matter



20k saplings
planted

20 acres of
mangroves



Climate Impact

2032

percolation wells built for
conserving and percolating
26 crore litres of water

123

watershed structures creating
a water harvesting potential of
47 crore litres

1.7L

saplings planted through 20+
projects & 38 volunteering activities
creating over
**32,758kg carbon sequestration
potential**
(reference of 88k saplings)

123

solar lights installed resulting in
350 tons of CO2 reduced

Bidre Agrahara Lake

Begehalli Lake

Afforestation "Dense Forest"
effects at Doddasagere in
Tumkur District, Karnataka

Before



After



Education for All

Learning is a lifelong journey and education is often referred to as the foundation of a better society, a gateway to personal and collective upliftment. In India, where socio-economic disparities create barriers for millions of children, we have taken on the responsibility of ensuring that education reaches those who need it the most.



Our focus is on making education **accessible, inclusive, and impactful**, by providing safe, conducive learning environments and fostering innovative learning spaces that encourage creativity and experimentation. Through our education programs, we emphasize health, hygiene, and physical development, while also nurturing life skills and vocational training across all age groups. By promoting hands-on learning and building the capacities of educators and students alike, our initiatives are shaping young minds and empowering future generations, reinforcing our dedication to lifelong learning opportunities for all.

Process: Life Cycle Approach

1 early foundations
FOCUS
(0-3 years)

2 early minds
EMBRACE
(3-6 years)

3 formal education
PATHWAY
(6-14 years)

4 youth empowerment
BUILDING RESILIENCE
(15-24 years)

1 Strengthening Early Foundations:
The life cycle approach focuses on the critical **first 1000 days** of a child's life. Through the Born Learning Campaign, we provide key health and nutrition interventions for expecting mothers and newborns.

2 Nurturing Early Minds:
We focus on building resilience in **children aged 3-6** by creating safe, enriching learning environments. Our programs promote holistic growth and support Anganwadi workers in Early Childhood Education.

3 Enhancing Education: WaSH, STEM & GendHer Initiatives

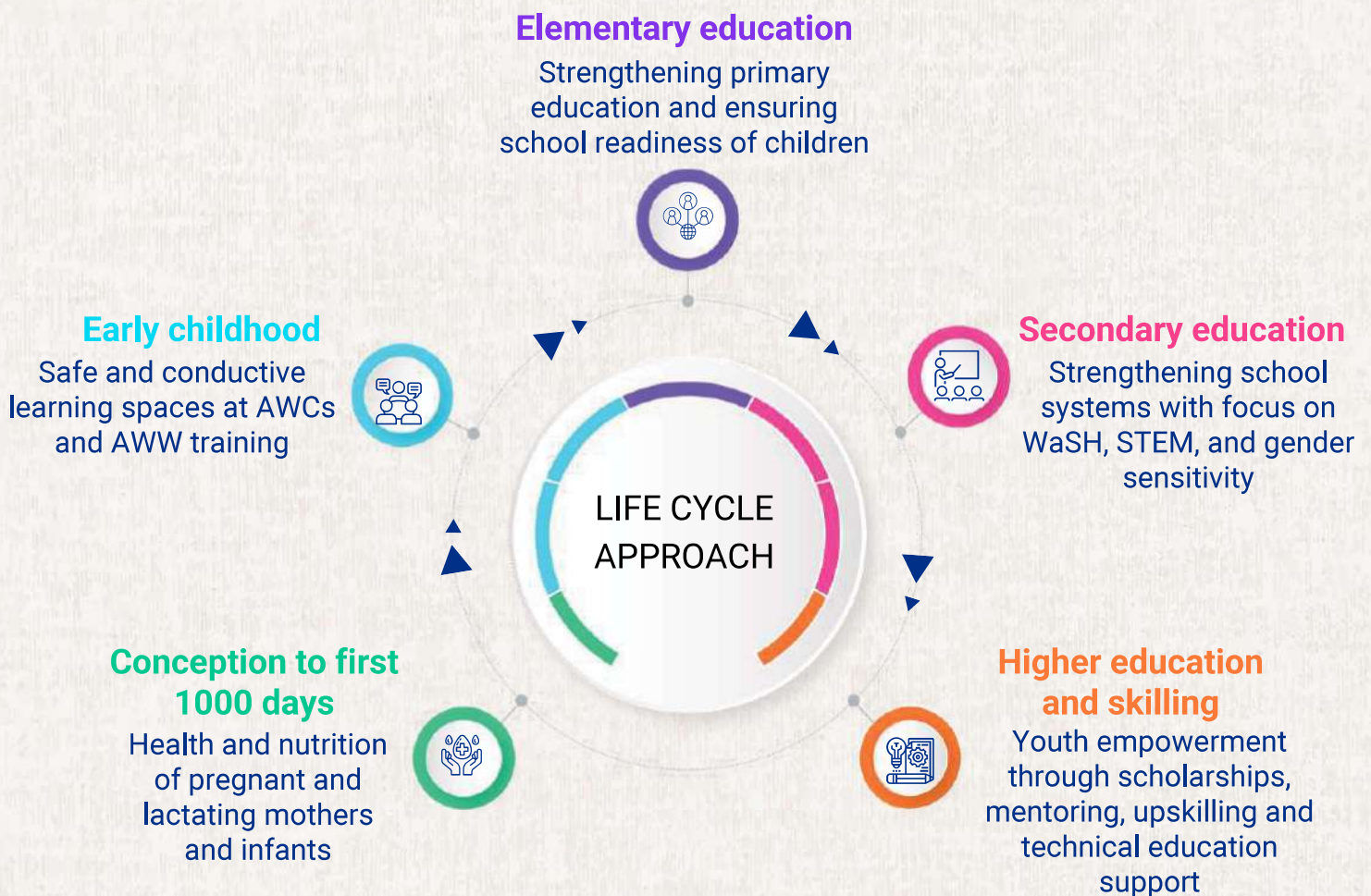
The initiatives create a holistic learning environment for **students aged 6-14**. WaSH programs promote hygiene and ensure access to clean, functional facilities, providing a safe space for learning. STEM education fosters creativity, hands-on learning, and critical thinking, equipping students with 21st-century skills.

4 Building Resilience: Youth Empowerment through Scholarship Support & Skill Development Program

Our scholarship support and skill development program alleviates the financial burden of higher education for **students aged 15-24**. Beyond financial aid, it empowers youth to pursue their academic dreams. Skill development programs offer practical training in technical, vocational, and life skills, preparing students for diverse career paths and excel in their professional journeys.

LIFE CYCLE APPROACH

Creating replicable models of intervention throughout the life cycle



Education impact



Our AWC refurbishments are targetted at creating safe, appealing spaces for young children to grow and learn. Through our studies conducted in AWCs, we have observed **between 26% to 46% increase in attendance percentage**.



Follow-up evaluations with Anganwadi workers revealed an increase in their **engagement with children** post-training, from **30% to 91%** over a period of 6 months.

35-43% of children aged 3-6 showed improved attainment of developmental milestones in AWCs that had received 3-year support.

School infrastructure efforts include a number of interventions for WaSH. **7,909 students** now have access to clean & safe hygiene facilities, with upgraded toilets and safe drinking water facilities.



Introduction of STEM labs is done to increase interest and understanding of STEM subjects in high school students. A study in one of our STEM lab intervention schools found that **academic performance** of 8-10th grade students **increased by 30%** in science & math over a period of 3 years.



1,284 students are pursuing higher education this year with the support of our **scholarships** to pay for school fees and other related expenses. To ensure this support is holistic, they also receive mentorship support from corporate volunteer experts through regular sessions.



Fancy dress competition for Nutrition Week

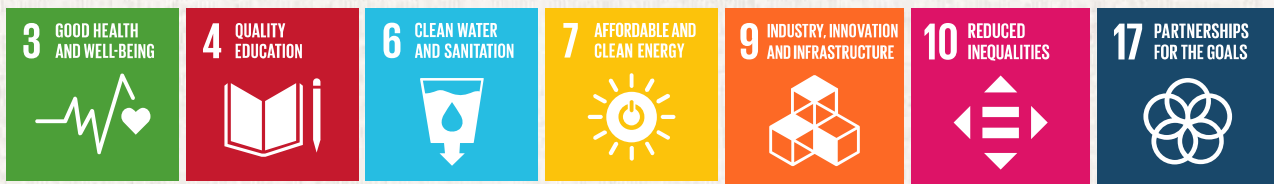


Mentorship program for school students



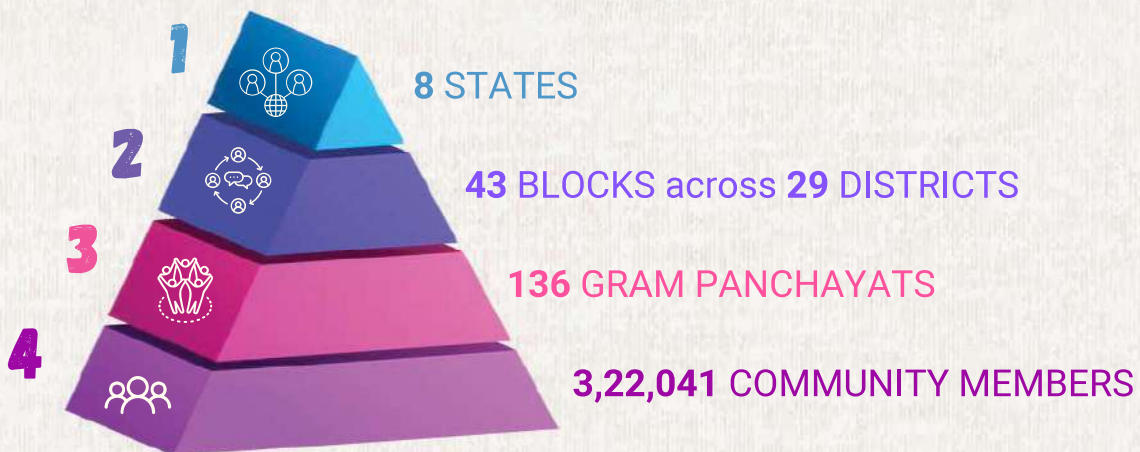
Student-led science project demonstration during a donor visit

Integrated Rural Development



Building self-sustainable rural communities through an integrated model aligning with the priorities of the Government and the community members.

Rural Rising is a comprehensive initiative aimed at addressing the multifaceted challenges faced by rural communities through a holistic and integrated development approach. This initiative recognizes the intricate interdependencies of different developmental areas and lays the groundwork for long-term development and resilience towards sustained quality of life.



Our Approach

The goal of our flagship campaign Rural Rising is to empower rural communities across four key pillars: **health, education, livelihood, and environment**. When we begin a new intervention, the needs of the community are first identified through a **Participatory Rural Appraisal**. These are then connected with relevant Government departments, and our activities are aligned with the Government programs and schemes.



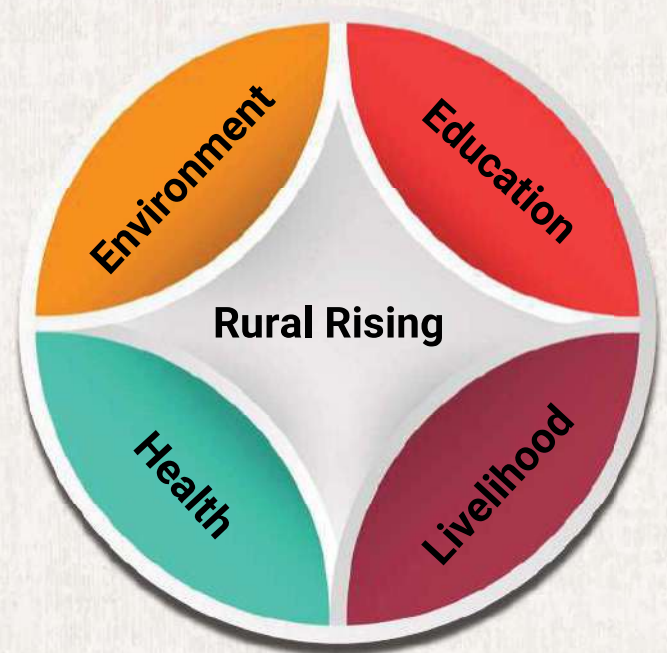
Government schemes we work with include MGNREGA, Samagra Shiksha Abhiyan, National Rural Livelihood Mission, Jal Jeevan Mission, and National Rural Health Mission

All stages of the intervention, from the needs assessment to the decision making processes, are designed and co-created with full involvement of all the stakeholders. Our teams on the ground are well connected with their communities, working closely with them to bring positive change to the day-to-day lives of the people.

Saturation approach

The Rural Rising approach involves targeting various needs of a community simultaneously, to provide improved health and wellbeing alongside educational, economic, and environmental empowerment.

Thus, in one location, we engage with a variety of different interventions. Lakes are rejuvenated and solar lights established, AWCs are refurbished and scholarships are provided, women and people with disabilities are provided with livelihood training & resources, and community toilets and primary health centres are set up.



UWBe's presence in Aspirational Districts

The Aspirational District Program has been launched by the NITI Aayog, a think tank under the Government of India. It has a vision of a transformed India by focusing on improving the Human Development Index and the living standards of the people by ensuring inclusive growth for all. As part of the program, **115 Aspirational districts** are identified across the country, which aims to improve 5 socio-economic parameters as mentioned below.



In 2023-24, UWBe had a renewed focus on Aspirational districts continuing from the previous year. We currently work in 3 Aspirational Districts - Wayanad (Kerala), Raichur (Karnataka), and Dharashiv (Maharashtra) and have an aim to expand further. We have reached out to **74,000 beneficiaries** from 3 districts this year.

Reach and Impact



STATE LEVEL

Work with states to influence policy & contribute to state programs.



DISTRICT & BLOCK LEVEL

Collaborate with officials across different departments, and prioritize working in government-identified **Aspirational Districts**.



GRAM PANCHAYAT LEVEL

Work in **convergence with government** schemes for coordinated efforts, and establish formal agreements with local governments.



COMMUNITY LEVEL

Our **Participatory Approach** actively involves members of the community, when assessing the needs of the community, through various decision making processes, and as they take ownership of projects for long-term sustainability.

Skills and Livelihood

The skills and livelihood interventions aim to foster women's empowerment, promote social inclusion, and enhance the capacity of individuals through targeted skill development and scalable initiatives. They focus on creating sustainable income opportunities while building a foundation for long-term economic self-reliance.



Juice & bunk shop



Mobility support for PwDs



Empowering livelihoods through livestock distribution



Candle making business unit owned by SHG Women



Beautician skill training course



COOKED MEAL INTERVENTION

Our intervention brings children to AWCs and provides them with tasty, home-cooked meals to build a habit and culture of nutrition in remote and aspirational districts.



HEALTH CAMPS

Health & counselling services are organised for members of the LGBTQ community to ensure safe access to health for all.



ACCESSIBILITY OF HEALTHCARE

We strengthen Primary Health Centres and provide them with state-of-the-art equipment and facilities, upskill healthcare workers, and have provided electric vehicles for workers in remote areas with limited mobility.



WASH INTERVENTIONS

Safe drinking water & clean, hygienic, disabled friendly toilets are established in schools and community areas towards comprehensive WaSH efforts.

Diversity, Equity and Inclusion

We strive to ensure that our interventions in all areas are safe and accessible to all, with a strong focus on minority communities and those with intersectional identities to pave the way for diversity, equity and inclusion.

Aikyam, our flagship program, aims to create safe spaces for the LGBTQ+ community. There is a strong focus on providing a voice to all community members in a confidential, safe, discrimination-free space.



The first safe space was inaugurated in September this year at Palace Gutthalli

The first safe space centre currently offers regular **health and counselling camps**, support for availing **social entitlements and schemes**, activities to build **safe community**, and **legal support sessions** for community members.



GendHer aims to empower teachers and students with knowledge and awareness on **sexual and reproductive health**, and **gender sensitivity and inclusion** towards an equal and safe learning environment for all.

Empowerment of People with Disabilities



Livelihood interventions through Rural Rising are aimed at benefitting people with disabilities, providing them with resources and livelihood opportunities. Anganwadi Workers receive training to identify special-needs children so that their needs can be appropriately catered to.



AWW's sharing prevalence of gender inequalities in their communities



AWW's participating in activities as a part of GendHer training



Body mapping activity in GendHer training



Distribution of menstrual hygiene kits to school students



Mentorship program on Gender & Sexuality for students

Volunteering

17 PARTNERSHIPS
FOR THE GOALS



Volunteering is an integral part of the United Way approach, as we work closely with our corporate partners through a large number of volunteering events. Volunteers have contributed to initiatives in environmental sustainability, education, rural development, and healthcare, among others.

By aligning these volunteer efforts with Corporate Social Responsibility (CSR) goals, we create a synergy that not only benefits the community but also enriches the volunteers' experiences, enhancing their connection to social impact work. Our structured approach ensures that each event is meaningful, allowing corporate partners to witness firsthand the positive changes they help bring about.

Volunteering contributes to **social impact, employee retention and recruitment, community engagement and development, and long term sustainable development.**



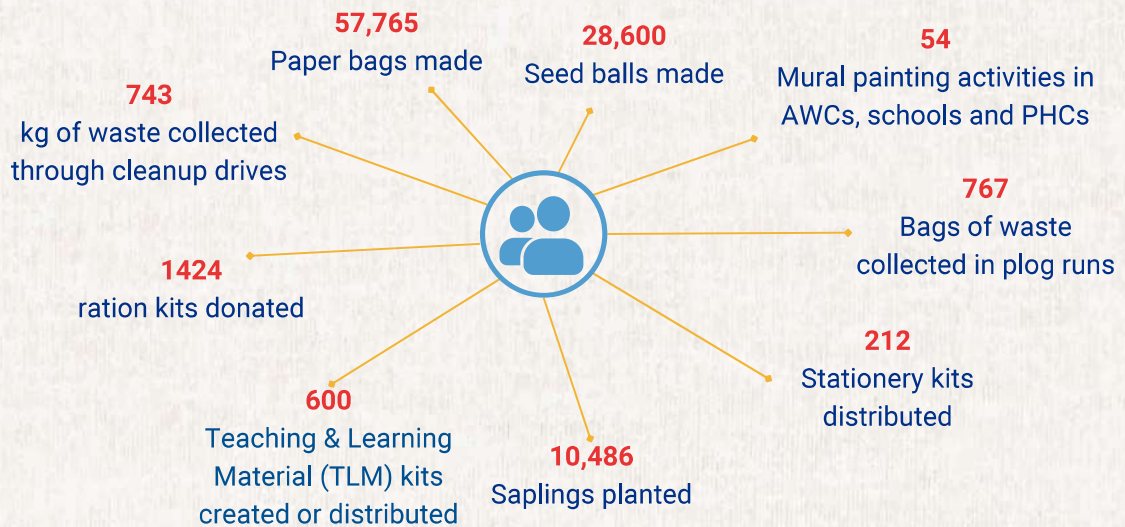
Volunteering Numbers



28,207
Volunteers



741 Hours
(Average
3hrs/Volunteer)



By the numbers

Health and Nutrition



11 Schools supported
with incinerators



624 Medical Kits
2810 Hygiene Kits



43 RO Units/water
filters Installed



2096
Nutrition Kits

GendHer and WaSH

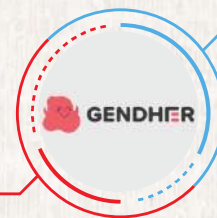
33

Girls toilets
refurbished/built



39

Boys toilets
refurbished/built



1325

Stakeholders
trained under
GendHer

53

Menstrual Hygiene
Sessions

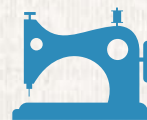
Skills & Livelihood



308 Women trained
in tailoring



83 Youth trained
in skilling



50 sewing machines

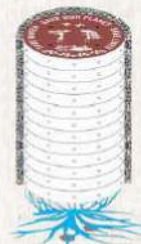


73 Tailoring kit
provided

Climate Action

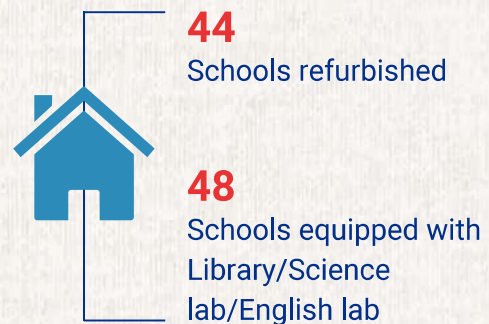
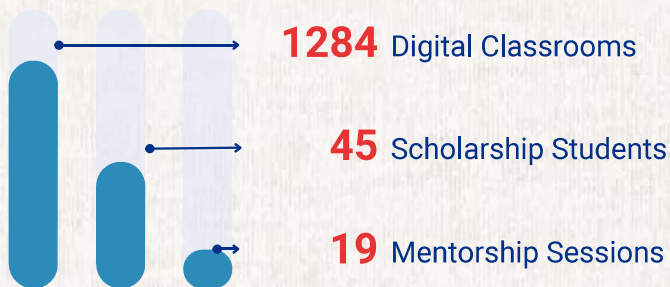
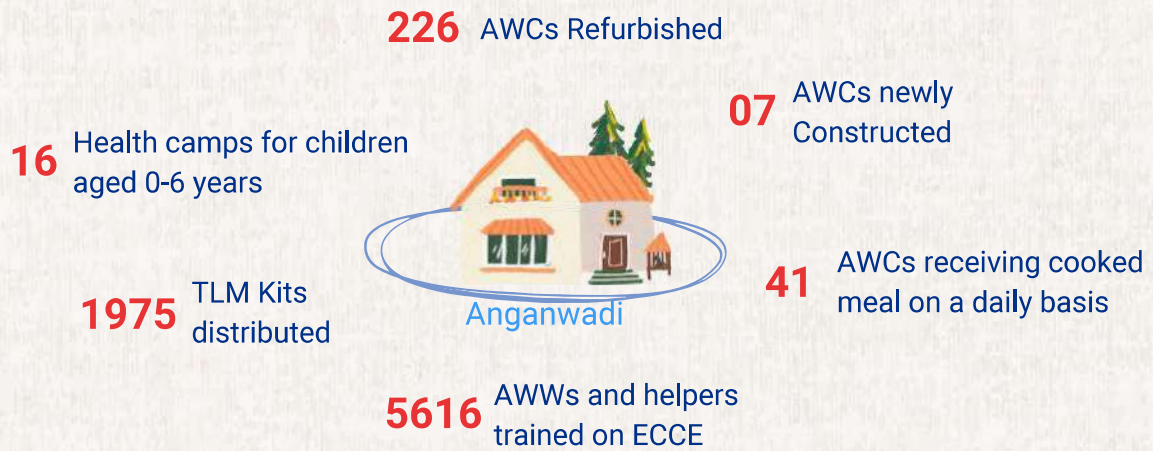


11 Lakes rejuvenated

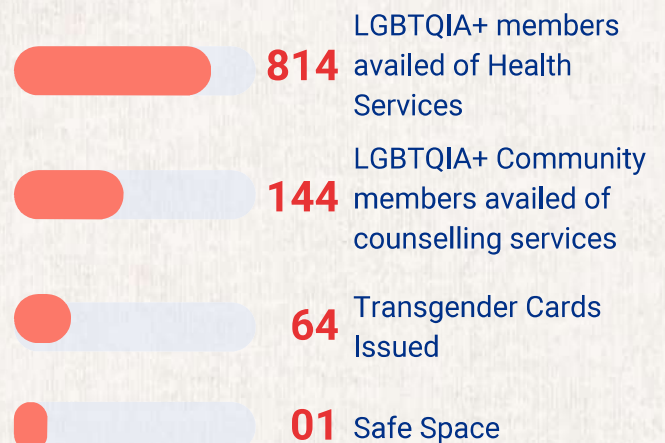
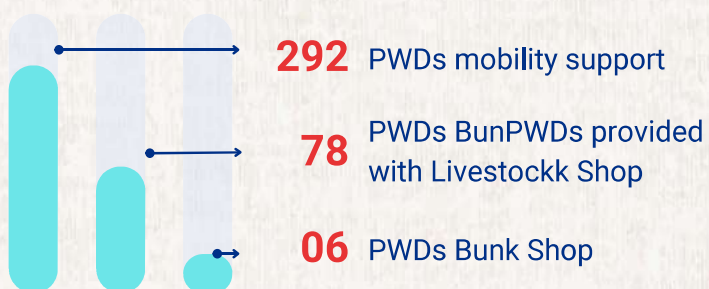


2032 Percolation wells
constructed

Education



Diversity, Equity, Inclusivity



Stories & Testimonials

STEM | Scholarship Programme

Resilience and Ambition: Vinisha's Journey

Vinisha Uttam Gavade, a dedicated student from Lokmanya Tilak Madhyamik Vidyalaya in Thergaon, recently interviewed for the SKF Scholarship program, a potential opportunity that could greatly impact her future. After achieving an impressive **84.80%** in her 10th grade, she was accepted into JSPM Diploma College to pursue a degree in computers. Vinisha credits her success to the STEM lab at her school and the encouragement of her teachers, believing the skills she gained there were vital for her acceptance into the diploma program.



Her journey, however, has not been easy. A recent home visit revealed that she is an only child, with her mother working as a house help while her father, struggling with alcoholism, is unable to maintain steady employment. They live in a single rented room, making her academic achievements even more remarkable. Despite these challenges, Vinisha is committed to making a positive impact in her life and community through education and technology.



Capacity Building Training on ECCE

Enhancing Early Learning: Kaladevi's Experience in TLM Training

I have gained valuable insights into TLM making through the puppet session and had the opportunity to create several types of puppets. I was deeply engaged in the storytelling session, learning how it fosters children's imagination. I discovered that incorporating sound, action, and emotion makes stories more impactful for listeners. It was truly one of the most enriching sessions I've attended. A special thanks to United Way and the HCL Foundation for this incredible experience.

Kaladevi, Anganwadi worker

Community members see the change

Previously, this lake was disappearing, but now its presence is undeniable, restoring life and hope to our children and villagers. We have experienced a positive change, with increased water and moisture levels in the surrounding areas, benefiting our livestock with better fodder. This transformation is not only beneficial but also beautiful.

Sarvaja, Community member



Stories & Testimonials

The Deep Impact of Restoring a Waterbody

The P Gollahalli waterbody restoration project began in 2023-24, conserving the traditional waterbody of our village, which positively impacted our livelihoods, and practices. Witnessing this waterbody, I know it helped the community and farmers with domestic water, drinking water indirectly and directly for the animals and the community, and improved groundwater recharge.

Yellappa, farmer & senior community member



Cultivating the future: Native forests for conservation and education in Koratagere

Two unique forest ecosystems have been developed within a developing government botanical garden and flora conservation center. The first is a dense forest plantation of **100,000 saplings from 44 different native species**, designed to mimic the natural biodiversity of the region. The second is a thorn forest plantation, featuring 2,500 saplings of 11 species that are specifically adapted to the local arid environment. These plantations are not only a step towards environmental restoration but are also integral to raising awareness about the importance of native species conservation.

By planting a diverse range of native trees, this project is helping restore local biodiversity while improving the health of the soil. The dense forest plantation will enrich the area's ecosystem, supporting various forms of wildlife and creating a more resilient environment. The thorn forest, which is particularly suited to dry conditions, will play a crucial role in conserving water and preventing soil erosion in the area. Over time, these forests will enhance the region's capacity to absorb carbon, contributing to climate change mitigation efforts and improving air quality.

Beyond the environmental benefits, this initiative is creating a space where people can learn about and connect with nature. As the botanical garden and flora conservation center develops, it will serve as a hub for tourism, environmental education, and research. Visitors will have the opportunity to witness the rich diversity of native plant life and gain a deeper understanding of the role that different species play in maintaining ecological balance. This hands-on experience will foster greater appreciation for the environment and inspire future conservation efforts.

Ultimately, this project is about more than just planting trees—it's about creating a sustainable future. By nurturing these forests, we are not only protecting the environment but also building a resource for education and awareness that will benefit both the local community and the broader public for years to come.

15 years of United Way Bengaluru



Testimonials

This year, we celebrated fifteen years of United Way Bengaluru and utilised the occasion to recognize the contributions of our supporters.



"I am immensely proud of our partnership with United Way Bangalore and the transformative impact it has had on the community around us. Together, we've witnessed how our CSR initiatives have spurred both economic and social growth, showcasing that a thriving community truly grows hand in hand with a successful company. Through our shared commitment to sustainability and environmental stewardship, we're not only building a better today but also ensuring a greener, more prosperous tomorrow for generations to come".

- Rajesh Lobo

Executive - Sr. Director, Plant Management, LM Wind Power Blades









"I have worked with United Way of Bengaluru since 2015 and in all these years I have seen them grow from strength to strength. The program portfolio, authentic connect with the community, realistic budgetary estimations for the programs, diligence in execution of programs and impact reports at the end of the program make them a go-to community partner. Their collaborative approach that includes government, community partners, corporate partners and Centres of Excellence for Research, responsiveness to the needs of the time and the flexibility and speed with which they deliver social programs has remained unmatched in the sector. As United Way of Bengaluru commemorates 15 years of its existence, I wish them the best and may their journey continue to touch many more lives".

- Dr Meenu Bhambhani

Vice President, Global Inclusion Diversity Equity Business Consultant
State Street Corporation, Bangalore, India

Financials

Balance sheet

UNITED WAY OF BENGALURU							
Crimson Court, #5, 2nd Floor, Jeevan Bhima Nagar Main Road, HAL 3rd Stage, Bangalore -560 075							
BALANCE SHEET AS AT 31-03-2024							
Particulars	Sch	2023-24			2022-23		
		LC	FC	TOTAL	LC	FC	TOTAL
SOURCES OF FUNDS							
General Fund	2	6,27,57,514	16,54,27,111	22,81,84,625	4,43,25,036	14,05,73,669	18,48,98,705
Earmarked Funds	3	89,13,04,727	98,38,95,532	1,87,52,00,259	88,80,80,272	1,12,72,04,726	2,01,52,84,999
Non Current Liabilities							
Long term provisions	4	15,82,967	-	15,82,967	24,69,012	-	24,69,012
Current Liabilities							
Duties and Taxes	5	13,600	-	13,600	63,61,632	21,47,174	85,08,806
Sundry Creditors		97,810	-	97,810	-	-	-
Short term provisions	6	5,36,660	-	5,36,660	16,84,141	-	16,84,141
Total		95,62,93,279	1,14,93,22,643	2,10,56,15,922	94,29,20,093	1,26,99,25,570	2,21,28,45,662
APPLICATION OF FUNDS							
Non Current Assets							
Property, plant and equipment	7	50,70,394	9,55,108	60,25,502	52,80,163	13,81,519	66,61,682
Long term deposits	8	13,30,000	17,00,000	30,30,000	50,36,846	28,53,598	78,90,444
Current Assets							
Short term loans and advances	9	31,24,341	21,74,762	52,99,103	17,98,646	21,74,762	39,73,408
Cash and bank balances	10	94,35,09,210	1,14,00,77,348	2,08,35,86,558	92,94,73,362	1,26,33,95,341	2,19,28,68,704
Other Current assets	11	32,59,334	44,15,426	76,74,759	13,31,075	1,20,349	14,51,424
Total		95,62,93,279	1,14,93,22,643	2,10,56,15,922	94,29,20,093	1,26,99,25,570	2,21,28,45,662
Significant accounting policies		1					
As per our report of even date enclosed							
for Vishnu Daya & Co LLP., Chartered Accountants Firm Registration Number: 008456S/S200092							
							
Guru Prasad Partner Membership Number. 219250							
							
Place: Bangalore Date: 19-09-2024		Prashanth Prakash Chairman					
		Hariharan Narayanaswamy Treasurer					
							
		Venkata Subhakar Namala Sr Vice-President					
UDIN : 24219250BKATBK6852							

Income & Expenditure account

UNITED WAY OF BENGALURU Crimson Court, #5, 2nd Floor, Jeevan Bhima Nagar Main Road, HAL 3rd Stage, Bangalore -560 075 INCOME AND EXPENDITURE ACCOUNT							
Particulars	Sch	2023-24			2022-23		
		LC	FC	TOTAL	LC	FC	TOTAL
INCOME							
Amounts appropriated from the earmarked funds for expenditure / disbursements on specified projects/activities	3	95,92,67,928	29,89,32,816	1,25,82,00,744	82,25,24,023	46,15,75,883	1,28,40,99,906
Interest on Saving Bank account		1,16,50,751	1,07,27,956	2,23,78,707	91,14,337	1,57,50,127	2,48,64,464
Interest on Fixed Deposit		63,68,484	1,41,25,486	2,04,93,970	39,69,600	47,12,807	86,82,406
Interest on Group Gratuity deposit		4,13,244	-	4,13,244	3,04,716	-	3,04,716
Interest on Income Tax Refund		-	-	-	4,35,355	-	4,35,355
		97,77,00,407	32,37,86,258	1,30,14,86,665	83,63,48,031	48,20,38,817	1,31,83,86,848
EXPENDITURE							
Amounts incurred from earmarked funds for expenditure / disbursements on specified projects/activities	12	88,09,98,107	28,48,43,642	1,16,58,41,749	79,14,35,128	42,78,25,422	1,21,92,60,550
Employee Benefit Expenses	13	5,28,93,302	1,33,60,453	6,62,53,756	1,58,77,739	2,87,09,505	4,45,87,244
Administration and other expenses	14	2,38,01,710	3,02,310	2,41,04,021	1,37,74,232	46,88,099	1,84,62,331
Depreciation	7	15,74,808	4,26,411	20,01,219	14,36,923	3,52,857	17,89,781
Total		95,92,67,928	29,89,32,816	1,25,82,00,744	82,25,24,023	46,15,75,883	1,28,40,99,906
Excess of Income over Expenditure		1,84,32,479	2,48,53,442	4,32,85,921	1,38,24,008	2,04,62,934	3,42,86,942
<p>Notes on Accounts 1</p> <p>As per our report of even date enclosed</p> <p>for Vishnu Daya & Co LLP, Chartered Accountants Firm Registration Number: 008456S/S200092</p> <p><i>Guru Prasad</i></p> <p>Guru Prasad Partner Membership Number: 219250</p> <p>Place: Bangalore Date: 19-09-2024</p> <p><i>Prashanth Prakash</i> Prashanth Prakash Chairman</p> <p><i>Hariharan Narayanaswamy</i> Hariharan Narayanaswamy Treasurer</p> <p><i>Venkaiah Subbarao Namala</i> Venkaiah Subbarao Namala Vice-President</p>							

Receipts & Payments account

UNITED WAY OF BENGALURU							
Crimson Court, #5, 2nd Floor, Jeevan Bhima Nagar Main Road, HAL 3rd Stage, Bangalore -560 075							
RECEIPTS AND PAYMENTS ACCOUNT							
(Amount in Rs)							
Particulars	Sch	2023-24			2022-23		
		LC	FC	TOTAL	LC	FC	TOTAL
Receipts							
Opening Balance :-							
Cash and Bank	1	92,90,75,096	1,26,33,95,341	2,19,24,70,438	1,01,14,70,210	1,27,04,45,142	2,28,19,15,352
Fixed Deposit		3,98,266	-	3,98,266	9,00,32,946	13,82,87,018	22,83,19,964
Donations		96,24,92,383	15,56,23,622	1,11,81,16,005	64,00,75,120	29,27,94,006	93,28,69,126
Interest Received	2	1,46,16,894	2,05,35,827	3,51,52,721	2,04,43,138	2,16,83,576	4,21,26,713
		1,90,65,82,639	1,43,95,54,790	3,34,61,37,430	1,76,20,21,414	1,72,32,09,741	3,48,52,31,155
Payments							
Project Expenses	3	88,19,87,146	28,54,56,066	1,16,74,43,212	80,10,61,171	42,19,19,148	1,22,29,80,319
Employee Benefit Expenses	4	5,21,09,488	1,22,06,855	6,43,16,343	1,27,44,707	3,24,08,143	4,51,52,850
Administrative & Other Expenses	5	2,74,01,756	18,14,522	2,92,16,277	1,13,68,044	43,16,034	1,56,84,079
Long Term Deposits	6	2,10,000	-	2,10,000	27,35,104	-	27,35,104
Fixed Asset Purchased		13,65,039	-	13,65,039	46,39,025	11,71,074	58,10,099
Closing Balance :-							
Cash and Bank	8	94,31,10,944	1,14,00,77,348	2,08,31,88,292	92,90,75,096	1,26,33,95,341	2,19,24,70,438
Fixed Deposit		3,98,266	-	3,98,266	3,98,266	-	3,98,266
Total		1,90,65,82,639	1,43,95,54,790	3,34,61,37,430	1,76,20,21,414	1,72,32,09,741	3,48,52,31,155

As per our report of even date enclosed

for Vishnu Daya & Co LLP.,
Chartered Accountants
Firm Registration Number: 008456S/S200092

Guru Prasad
Partner
Membership Number: 219250

Place: Bangalore
Date: 19-09-2024



Prashanth Prakash
Chairman

Venkata Subbanna Nambala
Sr Vice-President



Harsharan Narayanaswamy
Treasurer

Awards & Recognitions



NGO Leadership Award at the World CSR Congress & Awards 2024



For the fourth time in a row, UWBe has been recognized with the prestigious **GuideStar India Platinum Certification**



The **6th ICC Social Impact Runner-Up Award** for Gender Equality and Women Empowerment and the **Special Jury Mention for Promoting Education**, for 'GendHer' and 'STEM' initiatives.



The **ASSOCHAM South Award** for **Excellence in Employee Volunteering**.

Finalist in the iVolunteer Awards 23-24 as a **Leader in Volunteer Engagement**

Awards & Recognitions



2nd BW Social Impact
Award 2023



Acknowledgement from the
Government of Karnataka



Plan India Social
Impact Award 2023



India Responsible Leaders Award 2023



Junoon Award from Goonj - 2023

Board members



Prashant Prakash
Board Chairman



M P Hariharan
Member



H Narayanaswamy
Treasurer



Mariasundaram Anthony
Member



K T Chandy
Member



Winne Shekhar
Member



Lalit Ahuja
Member



Sanjeeva Kumar Jain
Member



Pashupati Kumar
Member

Our Flagship Campaigns



GIVE. ADVOCATE. VOLUNTEER

United Way of Bengaluru

Building No. 5, 3rd Floor, Crimson Court,
Jeevan Bima Nagar Main Road, HAL 3rd Stage,
DOS Colony, Jeevan Bima Nagar,
Bengaluru, Karnataka 560075

